

Installation Instructions

Timbre flooring is designed as a floating floor system and is installed by using the Valinge 5Gi click system. Timbre is intended for indoor use only. For the best results be sure to mix planks out of several boxes before installing. Timbre should be installed at ideal room temperatures between 18-27 degrees Celsius. For commercial installations, a constant room temperature should be maintained between 18-27 degrees Celsius. Avoid long periods of direct sunlight which can fade the floor over time.

Storage, Handling, Care and Precautions.

Timbre floors must be stored flat and horizontal.

Don't store directly on a cement floor, allow for air circulation.

Protect the carton corners from potential damage.

Storage should be maintained between temperatures of 10-27 degrees Celsius.

Tools and Materials.

5mm spacers, tape measure, circular, undercutting and jig saws. t-square, utility knife, safety glasses, vacuum, tapping block and mallet. use 5mm spacers only were required.

Subfloor Requirements

All substrates must be structurally sound and free from movement or deflection.

Substrates must adhere to all local building codes.

The substrate must be clean, flat and free of any defects.

To support the locking system, the subfloor must be level within 2-3mm over 3 meters.

Smooth and level floors with self-levelling compound.

Concrete

Concrete subfloors shall be **properly cured** and allowed to dry for a minimum of 90 days prior to installation. All concrete floors should be checked for flatness prior to installation and brought to proper specs before proceeding with installing your Timbre Floor.

Wood

- Suspended wood subfloors shall have a minimum of 50cm of well-ventilated air space clearance above the underside of the joists.
- A **moisture barrier** must be installed over 100% of the crawl space with 15cm overlapped joints at the widths and lengths.
- Moisture content of wood subfloor shall not exceed 12%. Test with a moisture meter.
- Wood subfloors must be structurally sound and deflection free and constructed according to local building codes.
- Repair any squeaky floor prior to installing Timbre Floors.
- Sand or plane high spots and fill all low points with a latex based patching compound. The subfloor must be flat within 2-3mm over 3 meters horizontal. Use a string line stretched tight across the floor to determine flatness.

Existing Sheet and Tile Flooring

- Existing flooring must be adhered, sound and in good condition.
- Existing floating floors must be removed.
- Existing floor must not exceed a single layer above the sub-floor.
- Repair any damaged areas.
- Existing sheet vinyl, VCT, LVT may require a skim coat if they are deeply embossed. Heavily cushioned vinyl floor or vinyl floor consisting of multiple layers are not suitable as a subfloor.
- Ceramic tile and terrazzo installed must meet flatness requirements. They should be made smooth by applying a cement overlay such as patching or leveling compound to smooth out surface or grout joints. If more than 2mm.

Carpeting

All carpeting and padding must be removed before laying Timbre Floors.

Radiant Heat

- Timbre Floors are suitable for installation over radiant heating systems provided that the heating element is not in direct contact with the flooring.
- New hydronic systems should be running two weeks before installation to remove residual moisture.
- Establish a constant room temperature of 18-27° Celsius prior to installation.

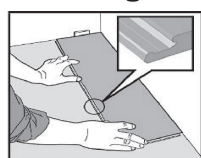
Room Preparation

- Remove all surface roughness or unevenness of the subfloor as they will, over time, show through the finished resilient (telegraph) and could result in small dents or cause excessive wear.
- Vacuum and remove all debris, dust and sand.
- Remove existing wall mouldings and doorway transition mouldings. The moulding must be of sufficient size to cover the 5mm expansion gap around the perimeter of the floor when over 80m².
- Leave at least 12mm between the surface of the flooring and the bottom of electric baseboard heaters to allow heat to circulate.
- Undercut door mouldings and casings to allow the flooring to fit underneath without restriction. Use a scrap piece of resilient and foam underlayment as a spacer guide.
- Sweep and/or vacuum substrate to remove all dirt and debris.
- After installation, it may be necessary to trim the bottom of any doors to allow for the change in floor height.

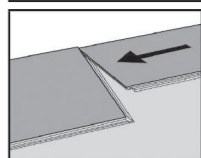
Getting Started

1. Determine in which direction the planks will be installed. To make the room appear larger or if installing in very small rooms or hallways, it is preferable to lay the planks parallel to the longest room dimension.
2. Minimize joint shadow by running board direction parallel to the primary light source.
3. Carefully measure the room to determine squareness and to determine the width of the last row of planks. If the width of the last row of planks is less than 50mm excluding the tongue, cut and adjust the width of the first row of planks accordingly.
4. For rooms wider or longer than 15m, the use of T-mouldings is required to account for the normal movement or seasonal expansion/contraction of the floor. A 5-7mm spacer for expansion is required when an area is greater than 80m².
5. Do not fit this floor flush against any fixed, vertical objects (eg. walls, pipes, passageways, staircases). A minimum of 2-3mm expansion space is required around the perimeter of the room as well as any fixed objects.
6. For best appearance install floor pieces selected from several boxes to ensure blending of colour variance. Avoid installing from one box at a time.
7. All floating floors require cabinets to be installed before installing Timbre Floors.
8. Inspect all planks for visible defects and damage before and during installation. Do not install damaged planks. Andersens will not accept responsibility for claims on flooring installed with obvious defects. During installation, inspect the groove area for any debris that may prevent proper assembly and locking of planks.

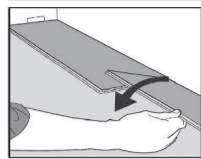
Installing Planks



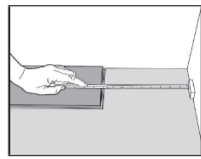
1. *First plank, first row.* Leave a 2-3mm gap to the left and position the plank tongue-side against the wall.



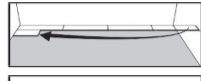
2. *Second plank, first row.* Drop this plank gently to the narrow end of the first plank.



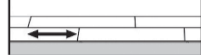
3. During the drop down, make sure the planks are tight against each other. Press or tap at the narrow end just installed.



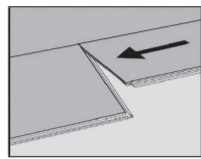
4. At the end of the first row, leave a 2-3mm gap, to the wall and measure the length of the last plank and cut it off.



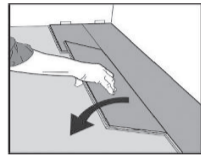
5. *Second row.* First plank should be a min length of 60cm. Click in place.



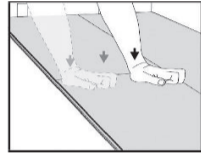
6. Minimum distance between narrow ends of planks in parallel rows shall not be less than 40cm.



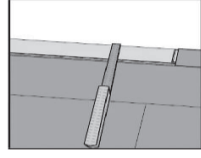
7. *Second plank, second row.* Drop the plank gently to the narrow end of the previous panel.



8. Click the plank to the narrow end of the previous panel. During the fold down, make sure the planks are tight against each other.



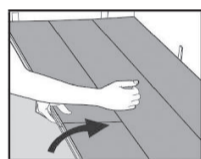
9. Press or tap along the narrow end of the installed panel.



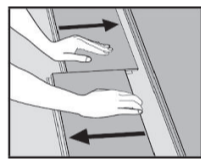
10. Last row. Minimum width 50mm. Remember to leave a 2-3mm expansion gap. Cut the panels lengthwise and glue the short ends.

Disassembling (without tool)

Your floor can be disassembled and reassembled if necessary.



1. Separate the row by carefully lifting and tapping the row in front and releasing the long side.



2. Disassemble the planks by sliding horizontally. *Do not lift to release.

Finishing the Installation

- Remove spacers from the perimeter of the room.
- Install transition mouldings. Do not fasten transitions through the planks.
- Install quarter round or baseboard moulding. Moulding must be sufficient size to cover the expansion space. Do not fasten mouldings through the planks. The use of a bathroom silicon can be used when the gap is 2-3mm.
- Use floor protection when moving furniture or appliances to avoid damaging the floor.

Maintenance and Care

- Do not use abrasive cleaners.
- The floor should be cleaned by using a vacuum-cleaner (attachment for wood floors) or swept. If required, wipe with a damp mop using mild soap or vinyl floor cleaner.
- Timbre Floors are waterproof, but are not guaranteed to provide a waterproofing membrane (liquids may penetrate to the space underneath the floor). Avoid pooling water on the floor. Wipe up spilt liquids.
- Expansion/Contraction. Daily temperature fluctuation of more than 6 degrees will cause the floor to expand or contract. Sunshine may need to be blocked with window covering to minimize daily temperature changes.
- Scratches are site related, and are not covered by the manufacturer's warranty. Use felt pads on furniture legs.

Do not use oil soaps, liquid or paste wax products or other household cleaners that contain citrus oils, lemon oil, tungoil, silicon, or ammonia since these warranties do not cover damage caused by non-recommended products. Use of these and other such products will harm the long-term performance of your floor and may also affect its recoat ability.

Do not use 2 in 1 cleaners with polish that may contain acrylics or urethane polish to restore gloss – the use of these products will void the finish warranty and may produce unsatisfactory results when not applied properly.

Maintain the proper Relative Humidity in your home between 35% - 55%. The use of a humidifier during heating seasons may help reduce shrinkage of the wood due to low humidity.

Note that we don't recommend steam mops as well.

25 Year Residential Limited Warranty

Subject to certain conditions described herewith, Andersens will provide replacement flooring free of charge if there's a loss of original pattern or colour under normal residential use of Timbre plank flooring. The floor must be installed in accordance to the installation instructions provided and carried out by a professional flooring installer or the original purchaser and maintained accordingly.

This warranty does not include costs of damage due to improper installation or maintenance, uneven subfloors outside of tolerance allowable, conditions arising from hydrostatic pressure, burns, scratches, stains or reduction in surface gloss level due to normal domestic wear and tear use over time. All pieces should be inspected prior to installation. Defective pieces should not be installed and do not qualify for a warranty claim if they've been installed. This warranty shall not cover loss of time, inconvenience and incidental expenses arising from a claim.

A warranty claim can only be made by providing a copy of the original bill of sale from the store that the product was purchased from. The floor must be inspected by an authorized representative appointed by Andersens first in the event that there's reason to make a claim.

This is a pro-rated warranty.

10 Year Light Commercial Limited Warranty

The limited commercial warranty is specified as light commercial use in areas such as boutiques, light traffic office and retail areas and all residential warranty conditions apply as outlined above. In light commercial applications, the floor must not be subjected to abrasive cleaning methods, wheels or castors, these types of conditions are considered to be medium to heavy commercial use and therefore the warranty will be void.